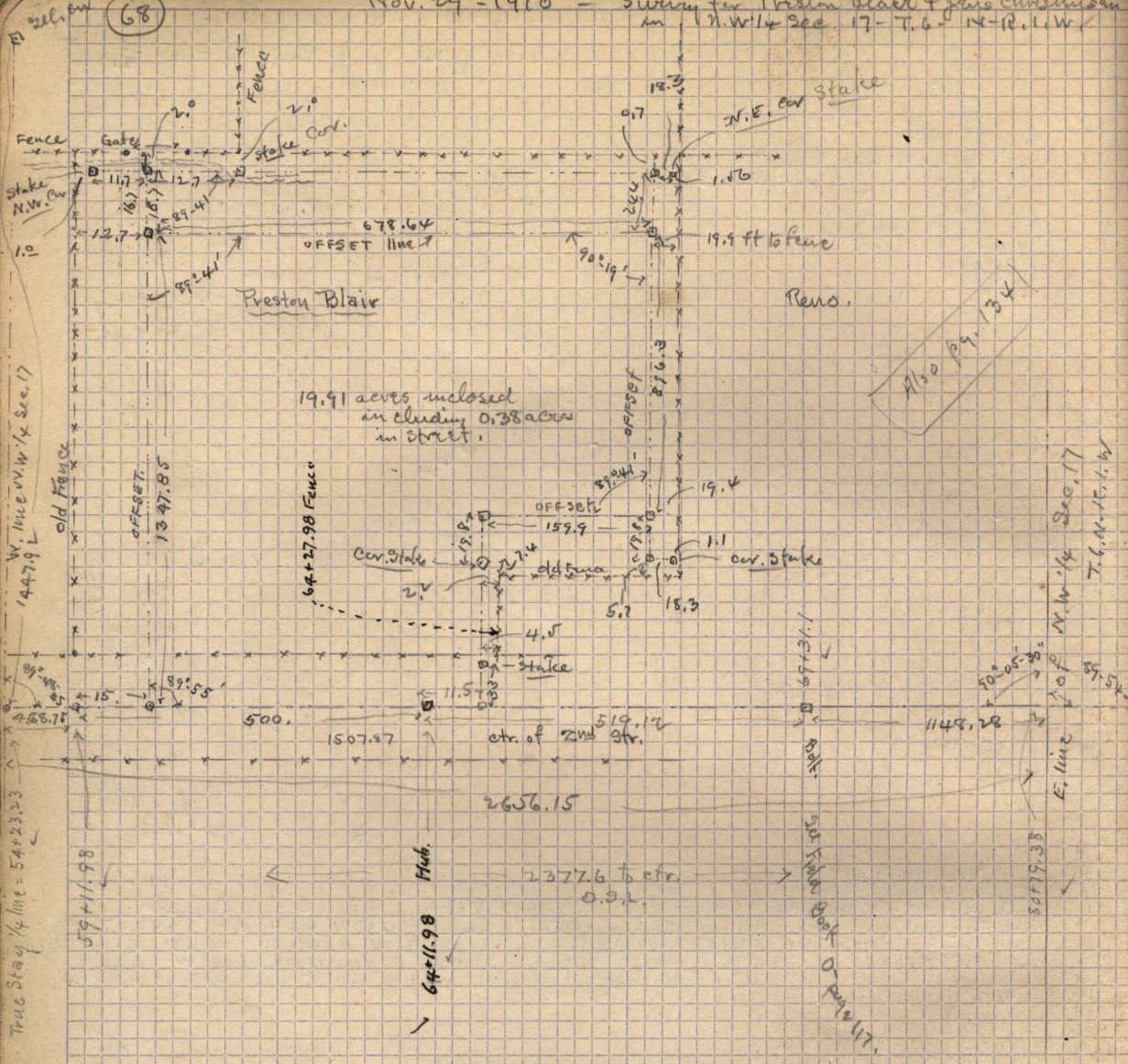


Nov. 29 - 1910 Survey for Preston Blair & Sons Christianman
in N.W. 1/4 Sec. 17 - T. 6 - R. 11 W.

(68)



W. line N.W. 1/4 Sec. 17
1447.92

True Stag 1/4 line = 54+23.23

N.W. 1/4 Sec. 17
7.6 N.E. 1/4

THIS
to 18" left
47.3 N.W. to cor. post
9.9 pt. S. to W. rail
96.3 N.W. to S.E. cor. Brack. res
106.1 N.W. to cor. post